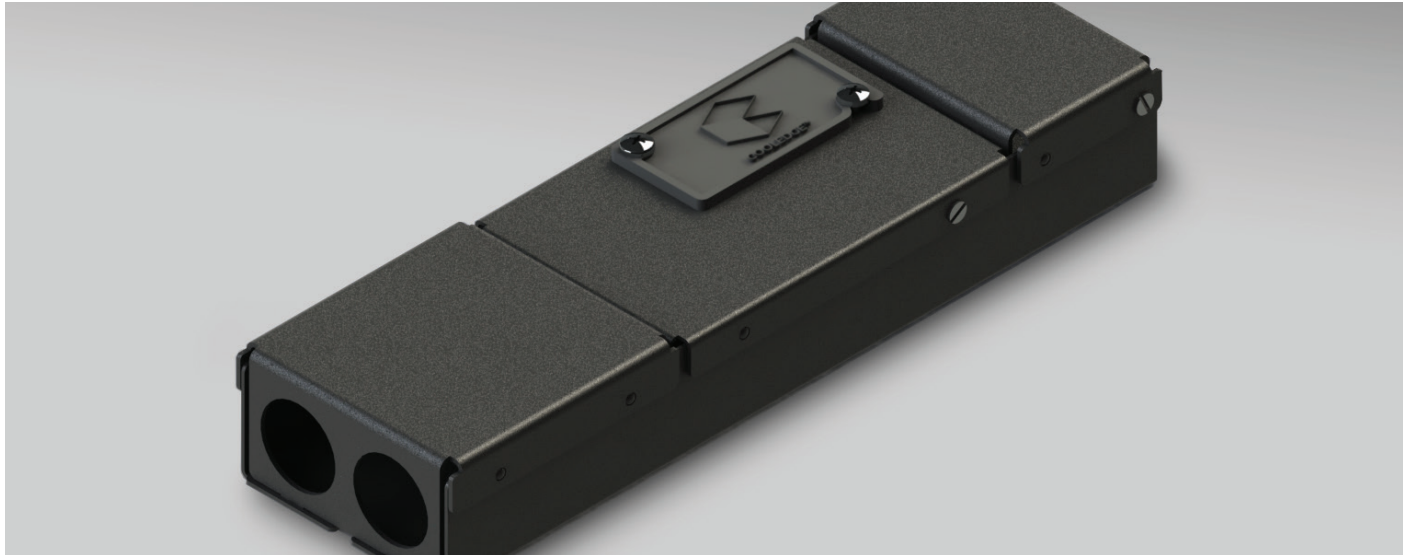


# COOLEGE™

## POWER & CONTROL

Control on the scale of nature enables large luminous surfaces using industry standard protocols.



Control on the scale of nature enables large luminous surfaces using industry standard protocols.

- Available in 24V and 58V options.
- Interfaces with a full range of industry standard control protocols from simple analog (0-10V), to digital (DALI/DMX), and wireless (Casambi) options
- Cooledge Control modules perform two functions: 1) convert a single incoming DC power source to multiple Class 2 output (<100W) channels; and 2) convert incoming signals to dimming and/or CCT tuning output to operate Cooledge TILE and LINE products.
- Up to 4 @ 90W output channels enable larger luminous surfaces while reducing the number of line voltage connections required
- The Cooledge Control Module is available in Casambi enabled (Bluetooth Low Energy wireless) models for deep dimming, tunable white, or dim-to-warm functionality

Incorporates Cooledge's proprietary "C-Tune" technology.

- This technology simplifies wiring, and significantly increases the affordability of tunable white lighting in comparison with static color temperature options.
- A single output for TILE Tunable White products reduces the opportunity for error that results from the multiple connections typically required for tunable white products.



COOLEGE™

# COOLEGE POWER & CONTROL

## SPECIFICATIONS

### DIMENSIONS

8.7" x 2.6" x 1.4" or 220mm x 66mm x 36mm

### OUTPUT POWER (W PER CHANNEL)

90 (Class 2): SCT = up to 4CH; TNW/DTW = 2 CH

### CIRCUIT PROTECTION

Overcurrent, Overvoltage, Reverse Polarity, Short Circuit

### DIMMING FREQUENCY (Hz)

3950

### DIMMING RANGE (%)

.05 - 100 (SCT, DTW); 1 - 100 (TNW)

### STANDALONE TEST MODE

Available

### MAXIMUM CONTROL CURRENT (SOURCE)

0.5 mA

### MAX WIRE SIZE

12 AWG / 3.3mm<sup>2</sup>

### RATED LIFETIME (HR)

70,000

### WEIGHT

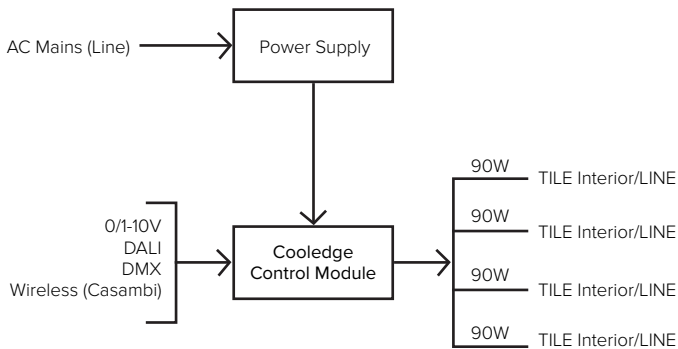
.47 lbs / 213g



## POWER & CONTROL SYSTEM OVERVIEW

### STATIC COLOR TEMPERATURE ("SCT")

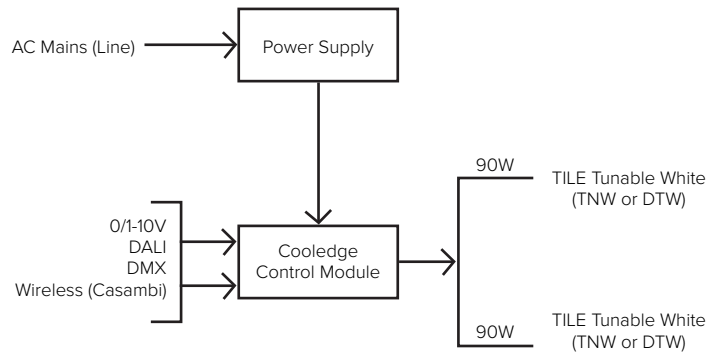
Provides 4 @ 90W output with 0.05% deep dimming for TILE Interior, TILE Exterior, and LINE.



### DYNAMIC COLOR TEMPERATURE

("TNW"=TUNABLE WHITE; "DTW"=DIM-TO-WARM)

Provides 2 @ 90W output for TILE Tunable White (tunable white and dim-to-warm)



5 Year Limited Warranty:  
Parts and workmanship  
when used with a Coolege  
approved power supply.

In Canada, TILE Interior must be  
installed within an enclosure

info@cooledgelighting.com | [www.cooledgelighting.com](http://www.cooledgelighting.com)

110-13551 Commerce Parkway, Richmond, BC, Canada V6V 2L1 +1 604 273 2665

COOLEGE™